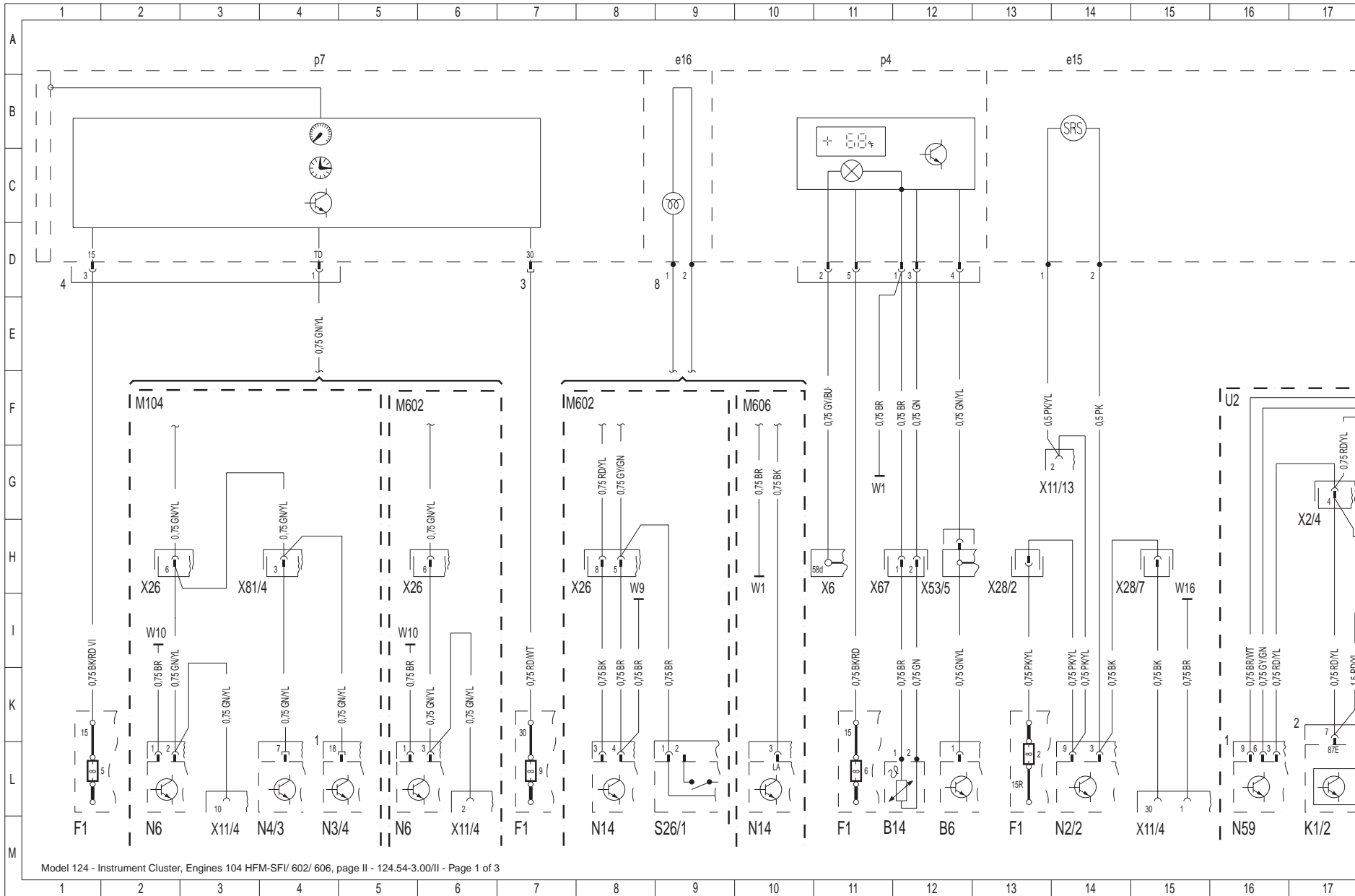


A1	Instrument cluster	18A	F1-5	Fuse 5, terminal 15	2L	W14	Ground (ABS hydraulic unit bracket)	
A1e15	Supplemental restraint system malfunction indicator lamp	14A	F1-6	Fuse 6, terminal 15	11L 24L	W16	Ground (component compartment)	
A1e16	Preglow indicator lamp	9A	F1-7	Fuse 7, terminal 15	32L 36L	Grounds not indicated, components are connected on engine block or bodywork		
A1e17	Antilock brake system malfunction indicator lamp	27A	F1-9	Fuse 9, terminal 30	7L	X2/4	Vehicle speed signal connector (ABS/engine) (4-pole)	17G
A1e21	Acceleration slip regulation function indicator lamp	35A	K1/2	Overvoltage protection relay module (87E/87L/30a, 9-pole) (Series K1/1)	17M	X4/1	Terminal block (terminal 30, interior)	21G
A1e22	Acceleration slip regulation malfunction indicator lamp	34A	N2/2	Supplemental restraint system control module	14M	X4/10	Terminal block (terminal 30/terminal 61 battery) (3-pole)	26E
A1e24	Automatic locking differential malfunction indicator lamp	34A	N3/4	Engine control module (HFM-SFI)	5M	X6	Terminal block (terminal 58d) (2-pole)	11H
A1e25	Automatic locking differential function indicator lamp	35A	N4/3	Cruise control/idle speed control module	4M	X11/4	Data link connector	3M 6M 15M
A1e26	"CHECK ENGINE" malfunction indicator lamp	21A	N6	A/C compressor control module	2M 5M	X11/13	SRS test connection (10-pole)	14G
A1p4	Outside temperature display	11A	N14	Preglow time-limit relay module	8M 10M	X11/18	ABS/ASR/electronic accelerator connector (chassis) (8-pole)	31H
A1p7	Electronic clock/tachometer	4A	N30	Antilock brake system control module	18M 27M	X11/21	Diagnostic module test connection (3-pole) (USA) - California	22M
A7	Antilock brake system hydraulic unit	19M 25M	N30/1	Antilock brake system/acceleration slip regulation control module	31M	X11/21x1	Diagnostic module test connection connector (USA) - California	22K
A7k1	Solenoid valve relay	26L	N30/2	Automatic locking differential control module	35M	X11/21s1	Pushbutton (with LED) (USA) - California	23L
A7k2	Return pressure pump relay	21M	N59	Diagnostic module I	16M	X26	Interior/engine connector (12-pole)	2H 5H 8H
A7m1	Return pressure pump	19M	S1	Exterior lamp switch	33M 37M	X28/2	SRS voltage supply connector (1-pole)	13H
A7/3	Antilock brake system/acceleration slip regulation hydraulic unit	28M	S26/1	Heated windshield washer system thermostwitch	9M	X28/7	Airbag test connection	15H
A7/3k1	Solenoid valve relay	29L	U2	Valid for (USA) California		X33/14	Cruise control connector (cockpit/engine) (10-pole)	29G
B6	Hall-effect speed sensor	12M	W1	Main ground (behind instrument cluster)				
B14	Outside temperature indicator temperature sensor	12M	W9	Ground (at left headlamp unit)				
F1	Fuse and relay box		W10	Ground (battery)				
F1-2	Fuse 2, terminal 15R	13L						
F1-3	Fuse 3, terminal 58R	34L 38L						

X46	ABS malfunction indicator lamp connector (1-pole)	26G
X53/5	Hall-effect sensor multipoint connector (vehicle speed 12H signal)	
X67	Outside temperature indicator connector (2-pole)	11H
X81/4	Engine/chassis harness connector (electronic accelerator / cruise control)	3H 22G
X81/5	Engine/chassis harness connector (electronic accelerator / cruise control) (California) (4-pole)	22G
X83/2	ABS/ASD/ASR malfunction indicator lamp connector (right footwell) (3-pole)	29G 35G
X83/5	Instrument cluster connector (ABS/ASR malfunction indicator lamp) (2-pole)	
Z7	Terminal 87E connector sleeve	31I
<p>Cross Section of Wire may differ from Values shown in Wiring Diagram. Changes in Cross Section of Wire will be Shown framed.</p>		
<p>Explanations and Notes of Wiring Diagram see Section 00-A Locations/Connections/Overview see Section 00-B/00-C</p>		

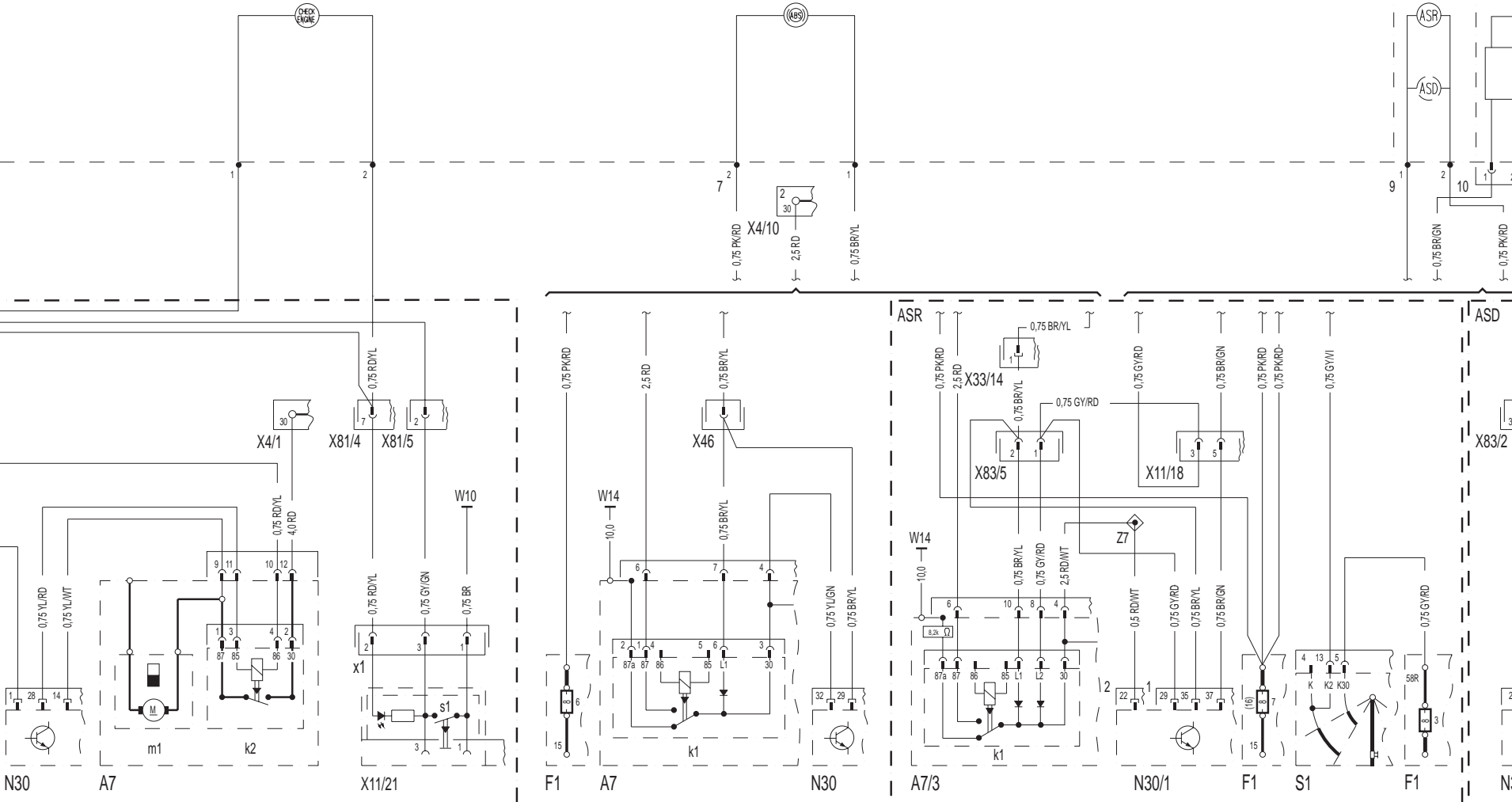


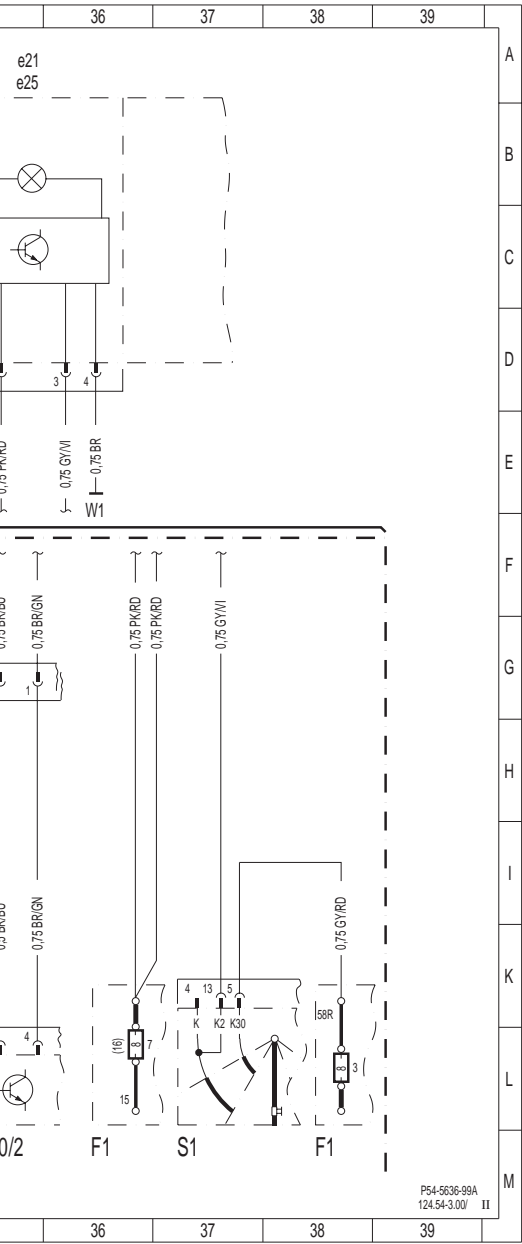
A1

e26

e17

e22
e24





P54-5636-99A
124-54-3.00/ II